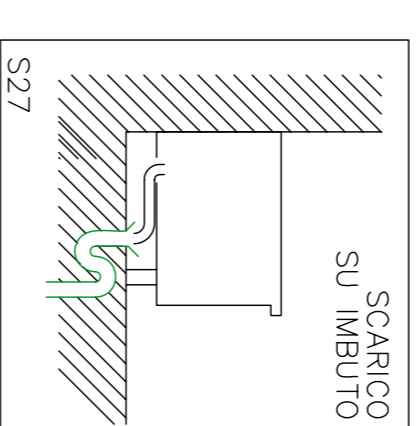
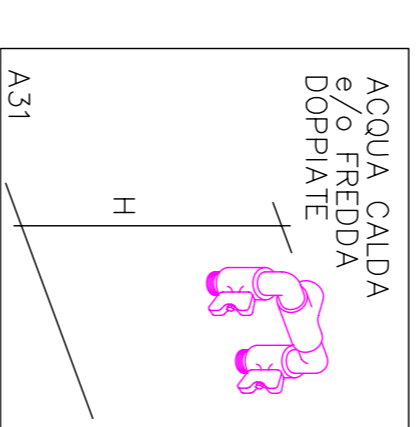
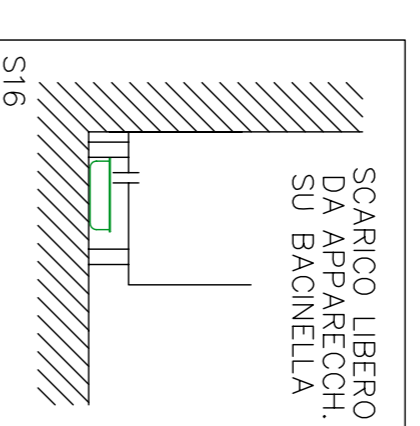
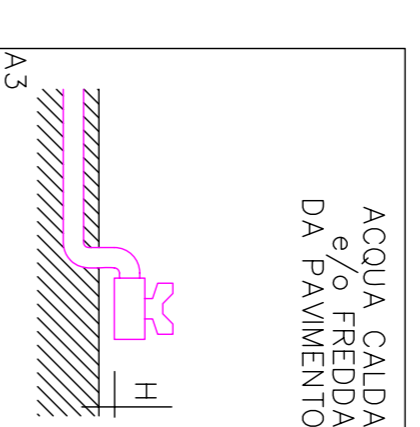
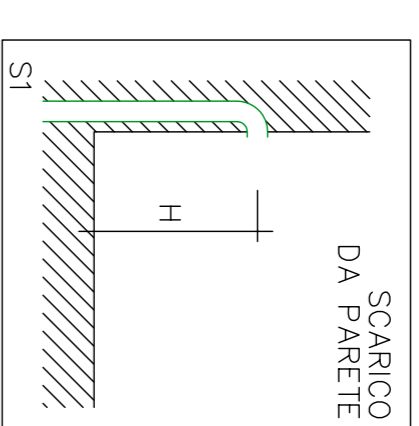
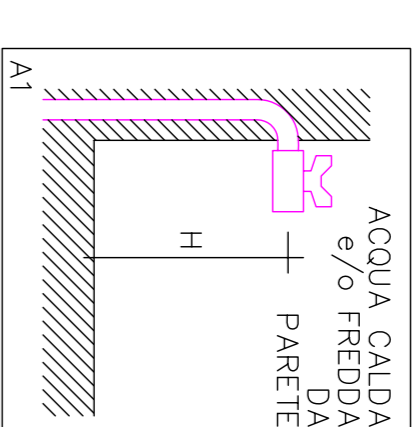


A = griglia 34x34
B = griglia 100x40

| POS | Q. | DESCRIZIONE | ACQUA CALDA | | ACQUA FREDDA | | SCARICHI | | | |
|------------------------------|----|--|-------------|------|--------------|-------|----------|-------|-------|------|
| | | | DIAM. | TIPO | H. mm | DIAM. | TIPO | H. mm | DIAM. | TIPO |
| LEGENDA PER ACQUA E SCARICHI | | | | | | | | | | |
| 7 | 1 | FRIGO DIGITALE 650 LT 1 PORTA -2+10° | | | | | | | | |
| 9 | 1 | LAVATRIO 2 VASCHE GOCCIOLATTO SX 1800MM | 3/4" | A1 | 440 | 3/4" | A1 | 440 | S27 | 50 |
| 10 | 1 | PELAPATE 10KG+DISCO ABRASIVO-230/1 | | | | | | | | |
| 12 | 1 | LAVAMANI CON STERILIZZATORE COLTELLI | 1/2" | A1 | 1200 | 1/2" | A1 | 80mm | S27 | 50 |
| 14 | 1 | LAVATRIO 1 VASCA GOCCIOLATTO DX 1200 MM | 1/2" | A1 | 100 | 1/2" | A1 | 100 | S1 | 340 |
| 17 | 1 | FRIGO DIGITALE 650 LT 1 PORTA -2+10° | 3/4" | A1 | 440 | 3/4" | A1 | 2" | S1 | 440 |
| 18 | 1 | ABBATTI/CONGELATORE X GN1/1-28KG-ACTIVE | | | | | | | | |
| 19 | 1 | FORNO MISTO 10 GN 1/1 + CAPPA CON ASPIRATORE | 3/4" | | 550 | 3/4" | A31 | 50mm | S27 | 50 |
| 22 | 1 | FREZZER DIGITALE 1400 LT 2 PORTE -24-15° | | | | | | | | |
| 25 | 1 | CIUOCIPASTA GAS 2 VASCHE 40 LT | | | | | | | | |
| 33 | 1 | TAVOLO PRELAVAG+VASCA D>S1200MM | 1/2" | A1 | 440 | 1/2" | A1 | 50mm | S27 | 50 |
| 34 | 1 | LAVAST CARPOTTI BOILER POTENZIATO 1180P/H | 3/4" | A1 | 100 | 3/4" | A1 | 40mm | S27 | 50 |
| 35 | 1 | CAPPA PARETE INOX 304+FILTRI 120X110 CM | | | | | | | | |
| 36 | 1 | TAVOLO SERV. LAVAST. CAR/SCAR 1200MM | 1/2" | A1 | 440 | 1/2" | A1 | 0 | S27 | -- |
| 40 | 1 | LAVATRIO PENTOLE 1 VASCA 1080X540 MM | 3/4" | A1 | 600 | 3/4" | A1 | 2" | S1 | 400 |
| 44 | 1 | FRIGO DIGITALE 650 LT 1 PORTA -2+10° | | | | | | | | |



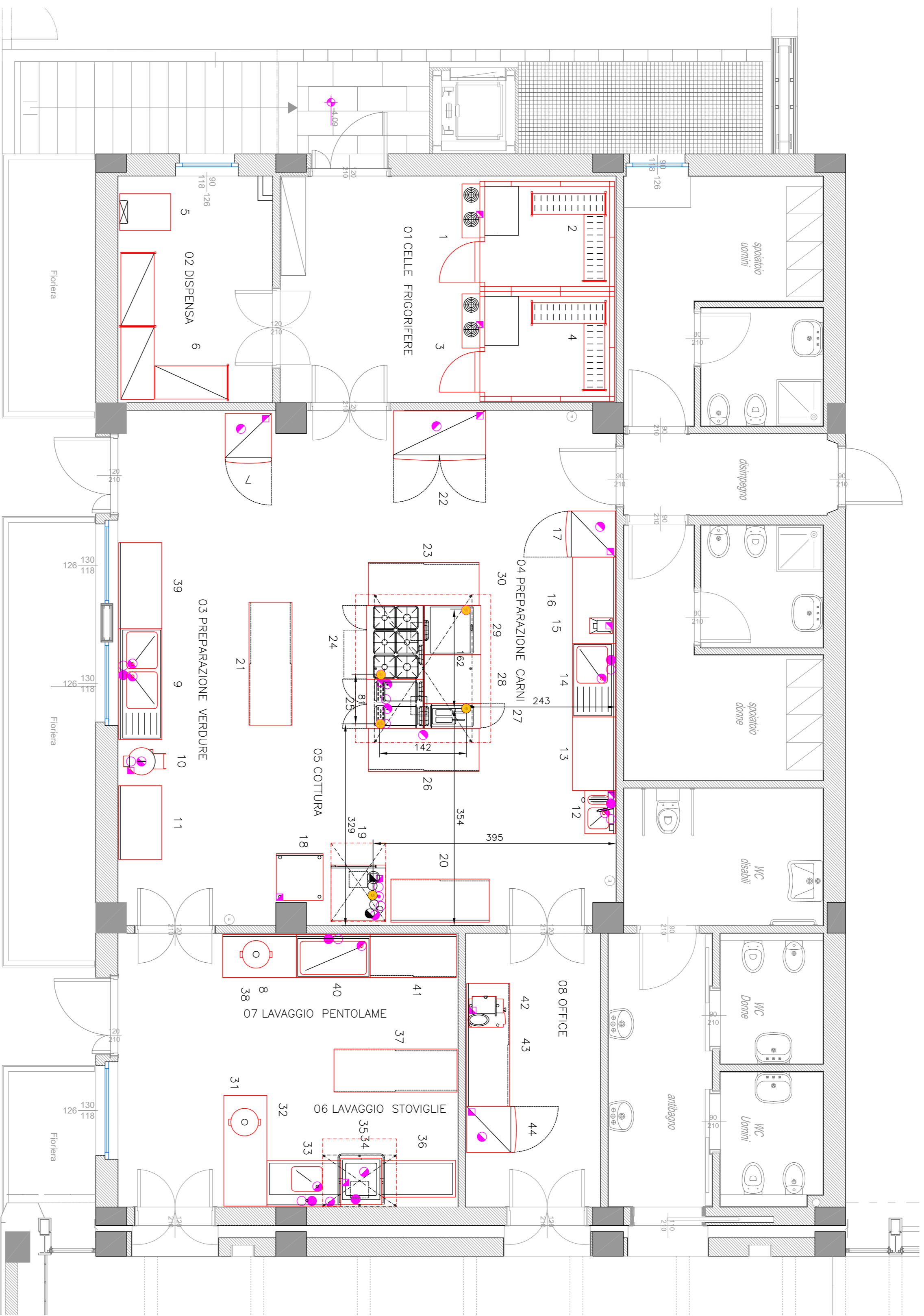
Legga del filo d'oro - Termini Imerese (PA)

Serie Progetto Impianti - costruttivo

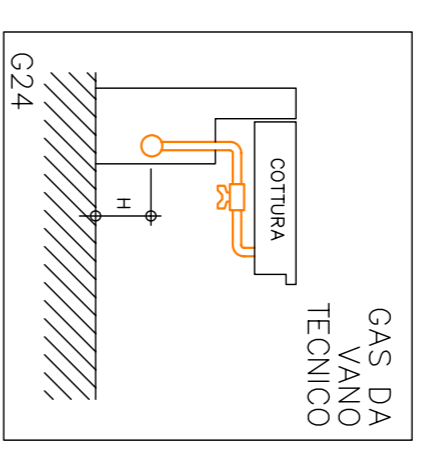
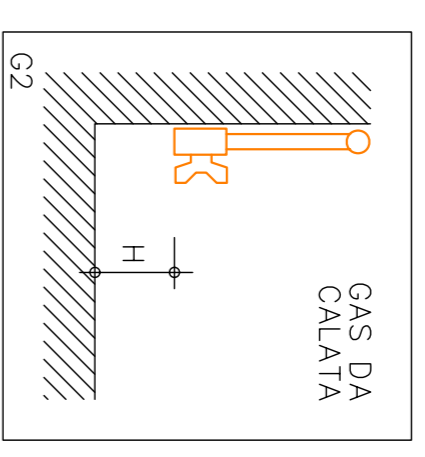
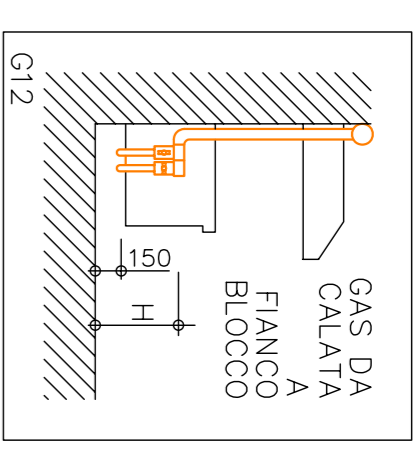
Corpo D - Pianta Piano terra
cucina - allacci idrici / scarichi

file: _____ data: _____ 29-09-2008

TAV
2C
Scala: 1:50



| POS | Q. | DESCRIZIONE | GAS | | |
|--|----|---|----------|-------|------|
| | | | POT.(kW) | DIAM. | TIPO |
| LEGENDA PER GAS | | | | | |
| 19 | 1 | FORNO CONVEZIONE VAPORE GAS 10X1/1 (L4) | 38 | 3/4" | G2 |
| 24 | 1 | CUCINA GAS 6 FUOCHI+FORNO+VANO1200 MM | 52,5 | 1/2" | G12 |
| 25 | 1 | CUOCIPASTA GAS 2 VASCHE 40 LT | 28 | 2x3/4 | G12 |
| 27 | 1 | FRIGG. GAS 23LT -1 VASCA+2 1/2 GESTELLI | 20 | 3/4" | G12 |
| 29 | 1 | FRYTOP GAS PASTR USC/INCL CROKNO 800 MM | 20 | 1/2" | G24 |
| Totale (Prodotti alternativi ed opzionali esclusi) | | | 158,5 | | |



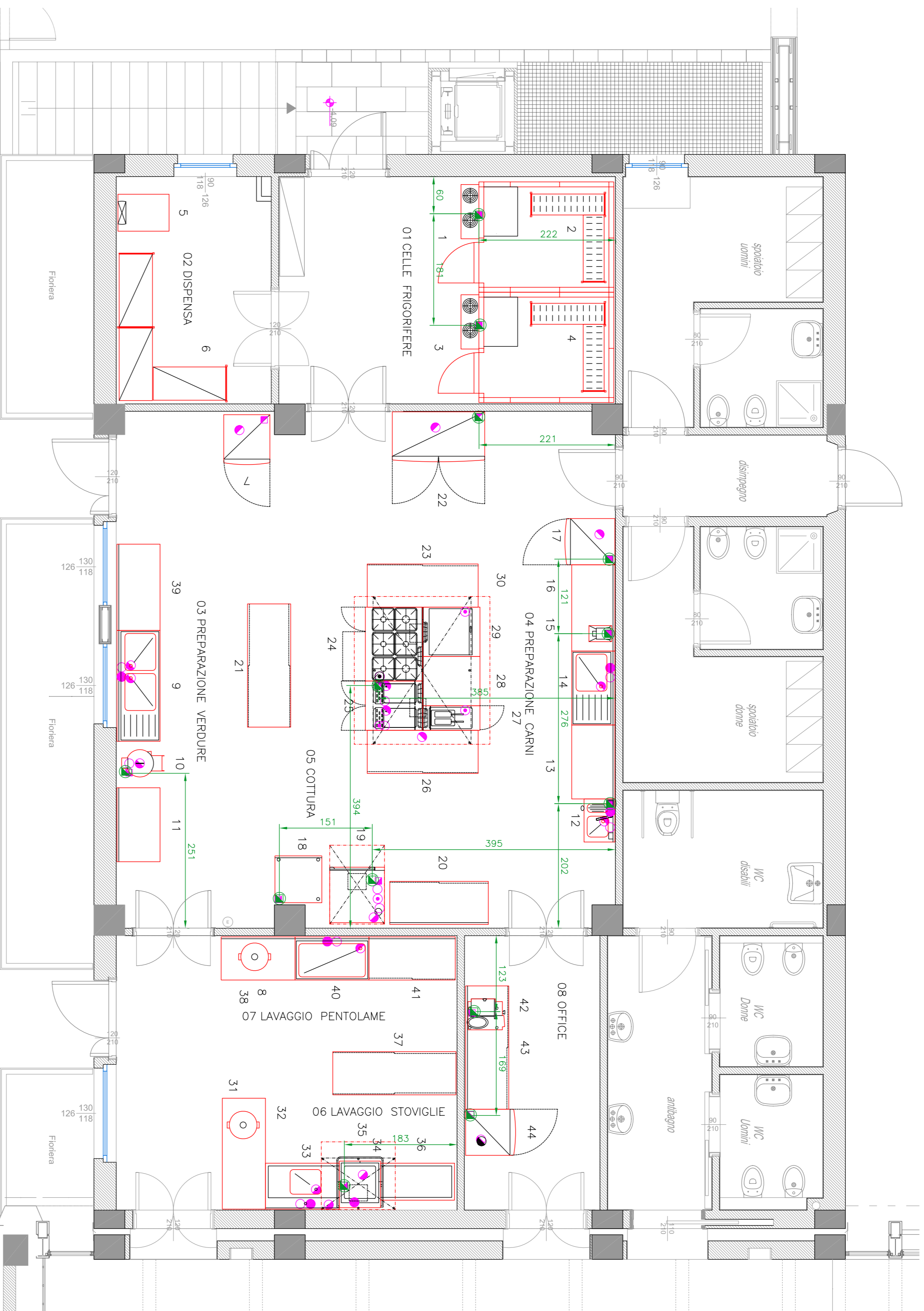
Legga del filo d'oro - Termini Imerese (PA)

Serie Progetto Impianti - costruttivo

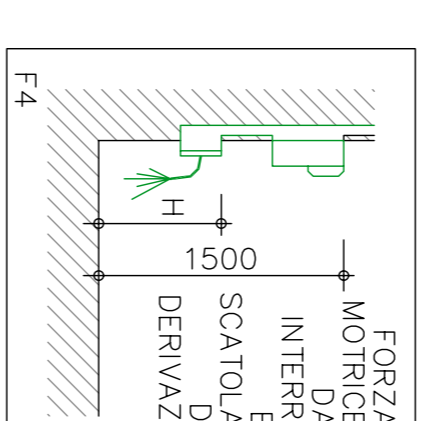
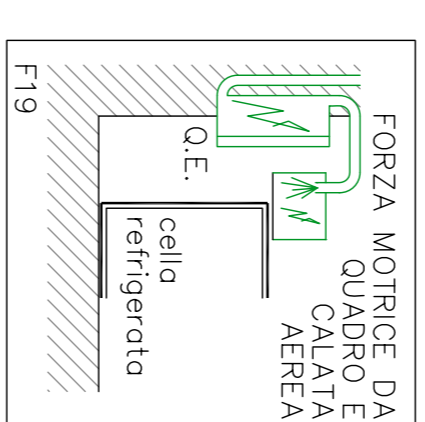
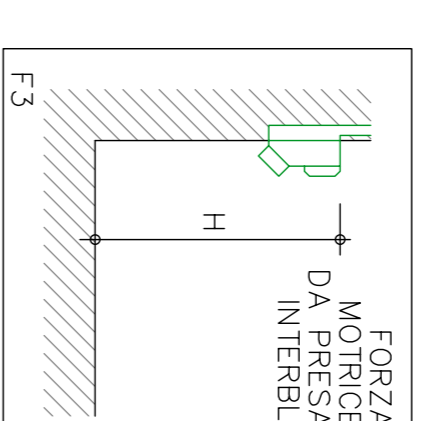
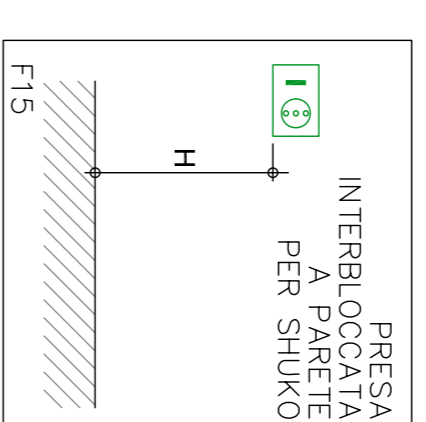
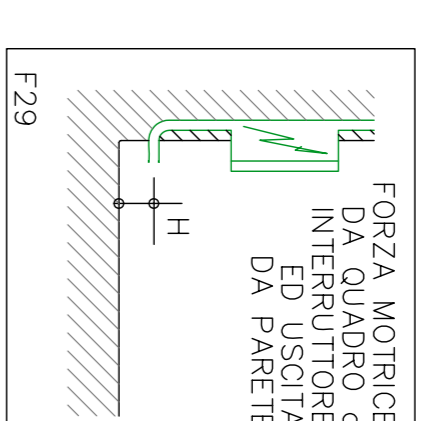
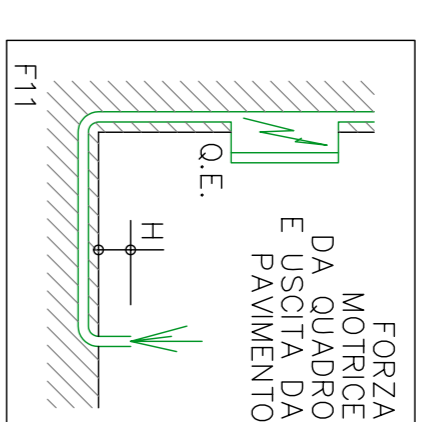
Corpo D - Pianta Piano terra
cucina - allacci gas

file: data: 29-09-2008

TAV 30
Scala: 1:50



| POS | Q. | DESCRIZIONE | ELETTRICITA' | | |
|--|----|--|--------------|----------|------|
| | | | POT. (kW) | ALIMENT. | Tipo |
| LEGENDA PER ELETTRICITA' | | | | | |
| 1 | 1 | CELLA 163x203 -2+8C UNITA' MONOBLOCCO | 0,85 | 230/1N | F19 |
| 3 | 1 | CELLA 163x203 -2+8C UNITA' MONOBLOCCO | 0,85 | 230/1N | F19 |
| 7 | 1 | FRIGO DIGITALE 650 LT 1 PORTA -2+10' | 0,375 | 230/1N | F15 |
| 10 | 1 | PELAPAPATE 10KG+DISCO ABRASIVO-230/1 | 0,37 | 230/1N | F3 |
| 12 | 1 | LAVAMANI CON STERILIZZATORE COLTELLI | 1,5 | 230/1N | F29 |
| 15 | 1 | MOTORIDUTTORE DA BANCO ATTACCO 22-400/3 | 1,1 | 400/3 | F3 |
| 17 | 1 | FRIGO DIGITALE 650 LT 1 PORTA -2+10' | 0,375 | 230/1N | F15 |
| 18 | 1 | ABBATTI/CONGELATORE X GN1/1-28KG-ACTIVE | 2,29 | 400/3N | F4 |
| 19 | 1 | FORNO MISTO 10 GN 1/1 + CAPPA CON ASPIRATORE | 0,35+0,42 | 230/1N | F29 |
| 22 | 1 | FREEZER DIGITALE 1400 LT 2 PORTE -24-15' | 0,96 | 230/1N | F15 |
| 25 | 1 | CUOCIPASTA GAS 2 VASCHE 40 LT | 0,2 | 230/1N | F11 |
| 34 | 1 | LAVAST.CARPOTTI.BOILER POTENZIATO 1180P/H | 12,1 | 400/3N | F29 |
| 42 | 1 | AFFETTATRICE A GRAV.300MM TRASM.CINGHIA | 0,185 | 230/1N | F3 |
| 44 | 1 | FRIGO DIGITALE 650 LT 1 PORTA -2+10' | 0,375 | 230/1N | F15 |
| Totale (Prodotti alternativi ed opzionali esclusi) | | | 21,88 | | |



Legga del filo d'oro - Termini Imerese (PA)

Serie Progetto Impianti - costruttivo

Corpo D - Pianta Piano terra
cucina - allacci elettrici

file: _____ data: _____

29-09-2008

TAV. 4C
Scala: 1:50